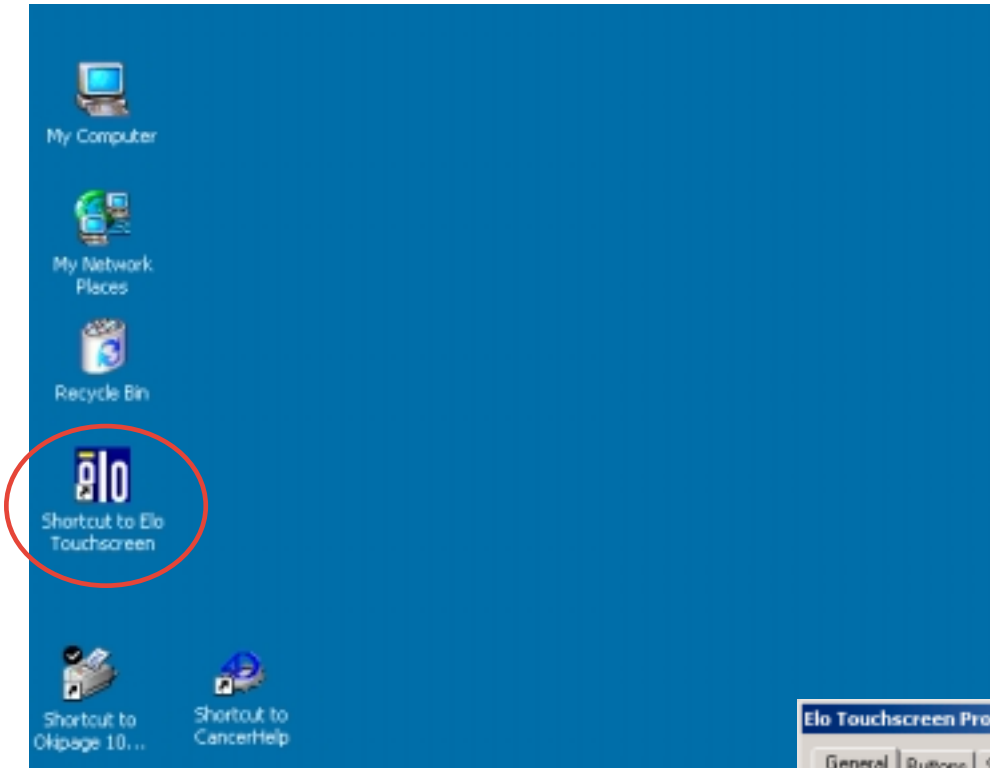


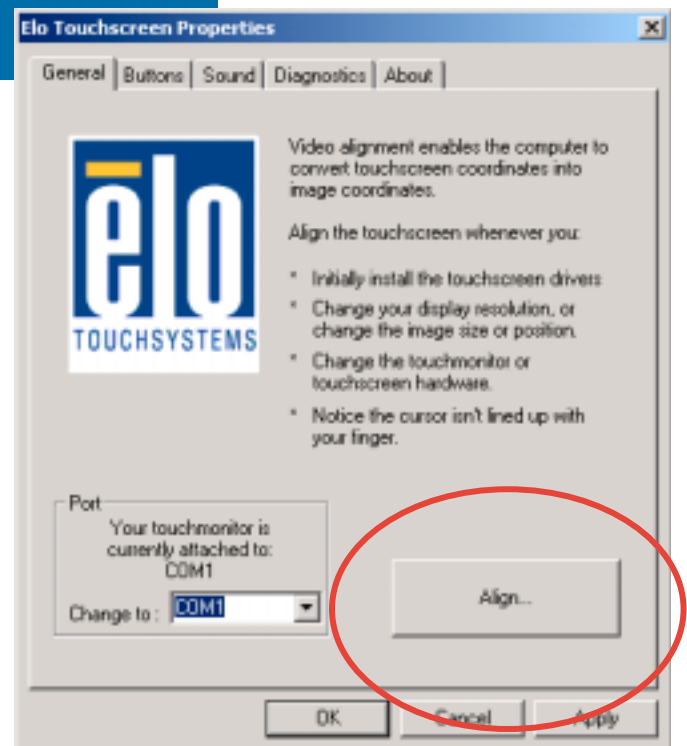
# Calibrating / Aligning your Elo TouchScreen Monitor

1. Connect the Keyboard and mouse to the computer. If the Screensaver is running, touch the screen or click the mouse once. This should bring you to the “English or Spanish Screen” in the CancerHelp Program. At that point Press and hold down the Control key and then press the period key. This will exit the CancerHelp Screens and go to a screen with the symbol “4D.” You will then see a menu in the top left corner of the screen with File, Edit and Help. Click on the File Menu and select the Word “Quit.” Please be patient as it takes about a minute to actually quit to the desktop. Once you have done that, you should be in the desktop of the computer. Your screen should look similar to this.



2. While in the desktop, look for the “Shortcut to Elo Touchscreen” Icon and double click on it to open the Elo Touchscreen Properties Window. Upon doing so, the window shown on the right will appear on the screen.

3. The next step is to Calibrate / Align the TouchScreen. To do this you need to click once on the “Align” Button with the mouse.



# Calibrating / Aligning your Elo TouchScreen Monitor

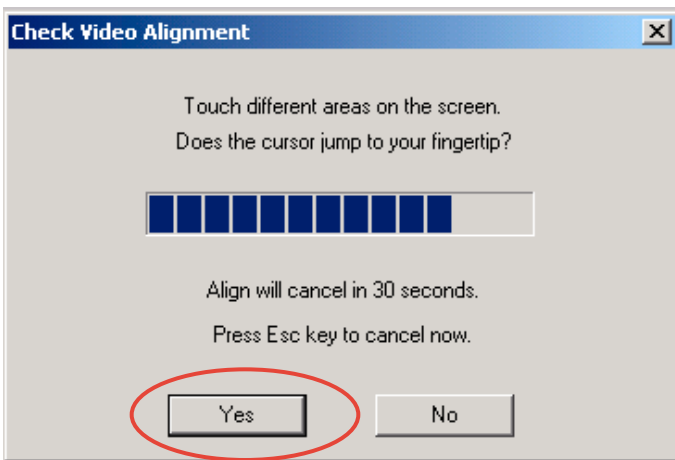
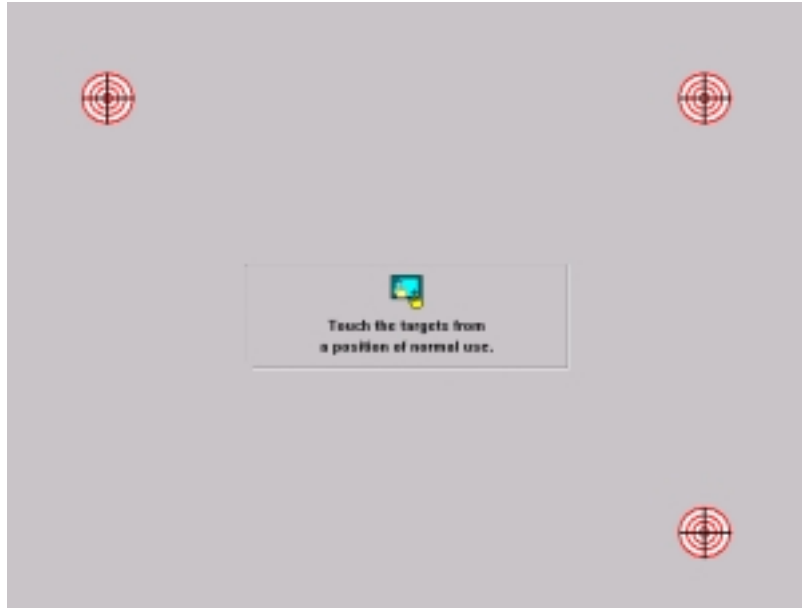
(continued from page one.)

## Calibration Screen

4. The screen will turn gray and you will see a message in the middle of the screen that says... "Touch the targets from a position of normal use." You will also see calibration targets as shown in the Calibration Screen illustration on the right.

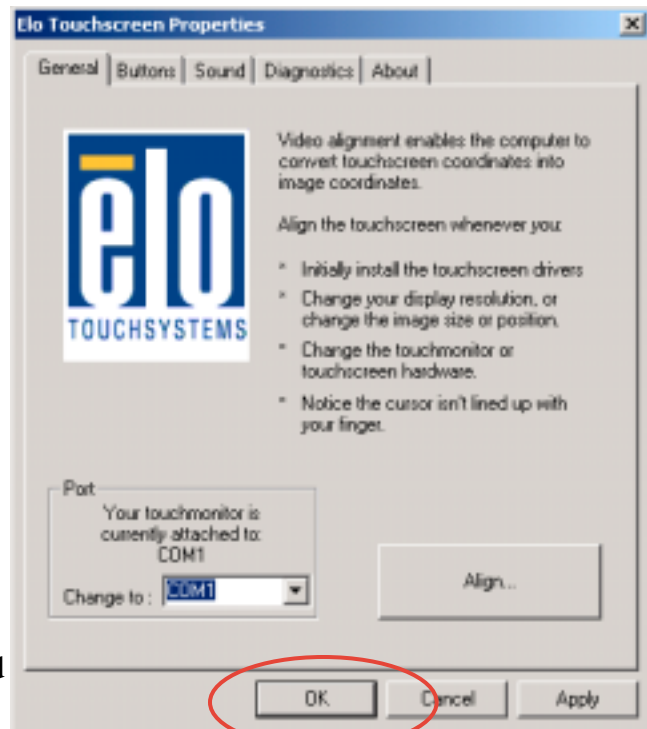
5. To calibrate your Touchscreen you need to start by touching the first Target in the upper left hand corner of the screen for 2 seconds and release. You then will see the second target appear in the lower right hand corner of the screen, Touch it for two seconds and release. Finally, another target will appear in the upper right hand corner of the screen, Touch that target for two seconds and release.

Once you have touched all three targets the Gray screen will disappear and you will then see a Message Box that will look like the one shown in the next illustration.



6. While the message box is present you need to touch different areas of the screen and verify that the cursor is following where you touch. You will need to do this quickly because "Check Video Alignment" box will only display for 30 seconds. Once you have confirmed that the cursor is following your touch, you will then need to touch the **Yes** button to close the alignment box.

7. After you have pressed the **Yes** button you will be taken back to Elo TouchScreen Properties Box shown on the right. Simply press OK and you have successfully Aligned / Calibrated your touchscreen monitor. You will need to restart your computer to launch the CancerHelp Program. To do this, move the mouse pointer to the Task Bar to the bottom left corner of the screen. If you don't see the Task bar, it will appear when you move the mouse arrow to the lower left bottom of the Screen. It may be intentionally hidden. Click on the Start icon and select "Shut Down." The "Shut Down" window will open and select "Restart" from the choices. Restart and CancerHelp will launch automatically. Put the keyboard and Mouseback to where you got them. If you have a Kiosk cabinet, lock the door.



Check that the touchscreen and printer are working by printing a topic from within the CancerHelp Program.